

[TopPage](#)>>[Search Result](#)>>7234B

Angular Contact Ball Bearings

Bearing No. : **NACHI 7234B**

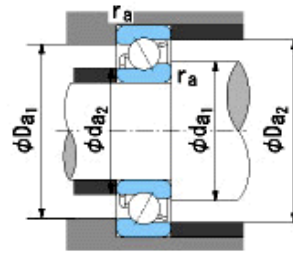
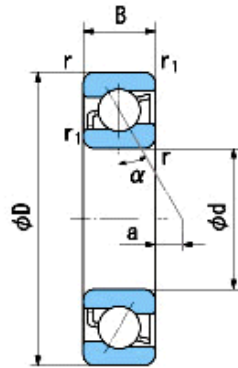
■ Bearing Type

■ Clearance

■ Tolerance Class

Dimensions

d = 170⁰_{-0.025}
 D = 310⁰_{-0.035}
 B = 52⁰_{-0.250}
 r = 4~6.5
 (Radial Direction)
 r = 4~9
 (Axial Direction)
 r1 = 1.5~3
 (Radial Direction)
 r1 = 1.5~5
 (Axial Direction)
 a = 74.7



Dimensions

da1(min) = 188
 da2(min) = 179
 Da1(max) = 292
 Da2(max) = 301
 ra(max) = 3
 ra1(max) = 1.5
 Mass = 17.4 kg

Basic Dynamic Load Rating Cr : **254,000** N
 Basic Static Load Rating Cor : **310,000** N
 Limiting Speed ;
 Grease Lubrication : **1,600** min⁻¹
 Oil Lubrication : **2,200** min⁻¹

	INNER RING	OUTER RING
O.D.Surface Runout with Side :		-
Axial Runout with Bore :	-	-
Axial Runout with Raceway :	-	-
Width Variation :	0.030	0.030
Radial Runout :	0.030	0.060